

EN

LUX PLUS

**ROYAL**  
**GREEN**

ANTIOXIDANT WATER PURIFIER

User Manual



NSF/ANSI 58



"Quality Water Quality Life"

444 18 22

[royalgreen.com.tr](http://royalgreen.com.tr)

# index

Page 02-03 Bonding Line Receiver Connections

Page 04-05 Purifying Tap Connection

Page 06 Montage of Water Tank and Front Residue Filter

Page 07 Connecting Hoses with Device

Page 08-09-10 Connection Diaphragms

Page 11 Filter Alteration Time

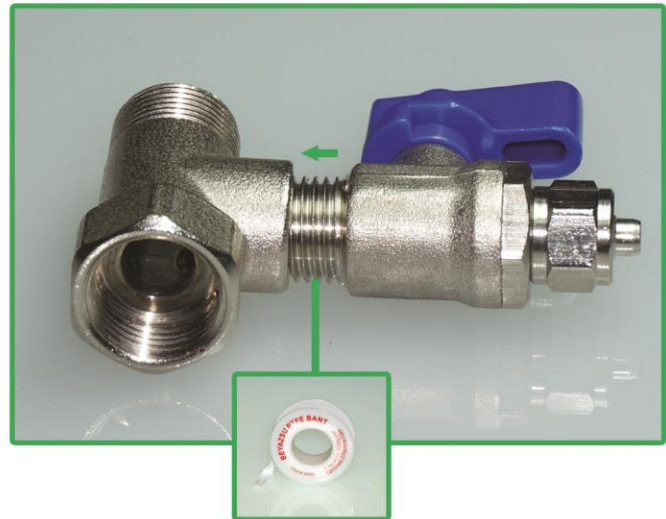
Page 12 Certificate of Warranty



## Line Receiver Extension and Preparation of Ball Valve

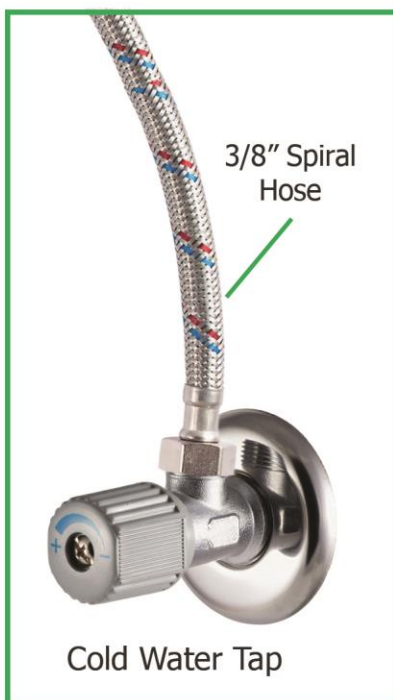


Set the gasket to 3/8" line receiver extension on the arrow direction

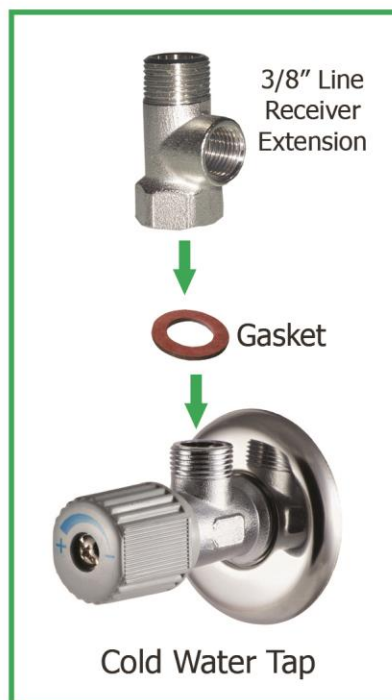


Roll the marked part of the ball valve with Teflon tape and reset it

## Connection of Tap Water



**Image-1**



**Image-2**

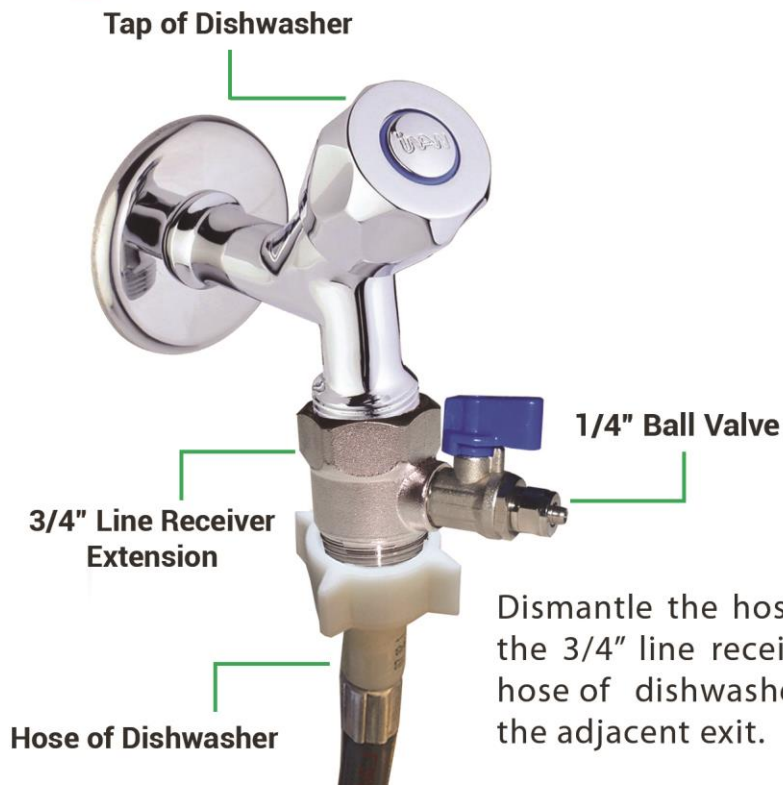


**Image-3**

Put out the spiral hose in the **Image-1** on the cold water tap under the kitchen washbasin and set the 3/8 line receiver extension seen on the **Image-2** with its gasket as shown and then tighten with through switch. Set the 1/4" ball valve its place as shown on the **Image-3**, roll the geared part of ball valve with Teflon tape, and set the dismantled spiral hose to the upper part of 3/8" line receiver extension as shown on the **Image-3**. In this way, we complete the T bonding in order to have water inflow to Royal Green device. If all steps are completed, let's move on the bonding step of the device to European Chrome Faucet over the counter. If your Water System is different from this connection way, please see the **PAGE 3** to view other connection ways.

## Other Line Receiver Solutions

### 2. Connection Way

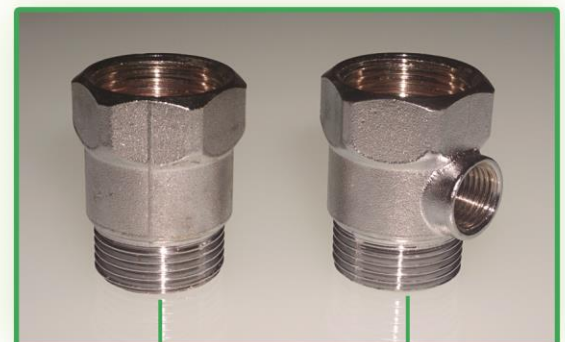


Dismantle the hose of dishwasher from the tap and connect the 3/4" line receiver extension between them. Connect the hose of dishwasher as indicated and set the 1/4 ball valve to the adjacent exit.



3/4" Line Receiver Extension

### 3. Connection Way



3/4" Line Receiver Extension (Blind Plug)

3/4" Line Receiver Extension

**Note\*\*\*** There is a standard 3/8" line receiver extension in montage packages. Please contact with our firm via **444 18 22** to get a 3/4" line receiver extension.



## Purifying Tap Connection

Firstly, make a hole with the diameter 12 mm by metal drill bit in the edge of metal kitchen washbasin, if any, to mount the purifying tap on the kitchen counter. If no appropriate place is on the metal kitchen washbasin, make a hole with the diameter 12 mm by a drill bit fitting for the counter (granite/marble/concrete/wooden etc.) in a place close to kitchen washbasin. You can use drill for drilling granite or marble easily, you can use hilti for drilling them much easier. Please remember to operate the hilti or drill with percussive mode.

**Note\*** Operate the drill with percussive mode to drill marble or granite easier. Operating it with percussive mode gives no damage to marble or granite, meaning that it doesn't occur blasting but only it can be severances with the diameter 1-2 cm in the lower surface of marble or granite. To prevent those severances, get the percussive mode off and go on without percussive by pouring some water to the open hole after drilling half of the marble or granite. If your kitchen counter is made of marbelite or wooden, you can drill without percussive in all.

**Note\*\*** If your kitchen counter's thickness is 10 cm or more, you can get a tap extender from our firm, please see **Image -1**



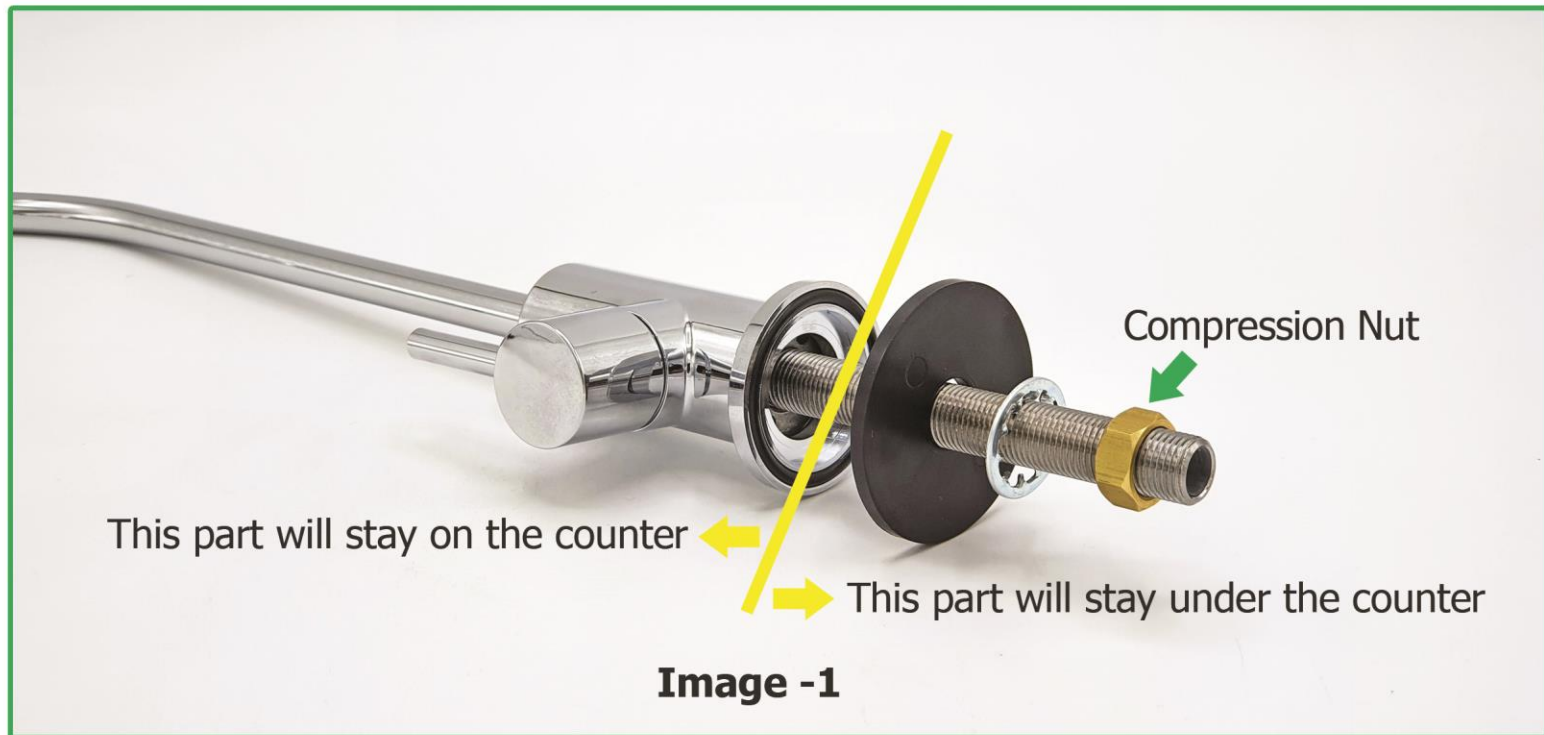
**Image -1** Tap Extender

## Affixing Top Gasket of Purifying Tap



O-ring gasket will stay under the tap in this way, and it will prevent the leak from upper part of kitchen counter to lower part. Lower gaskets are shown on the next page.

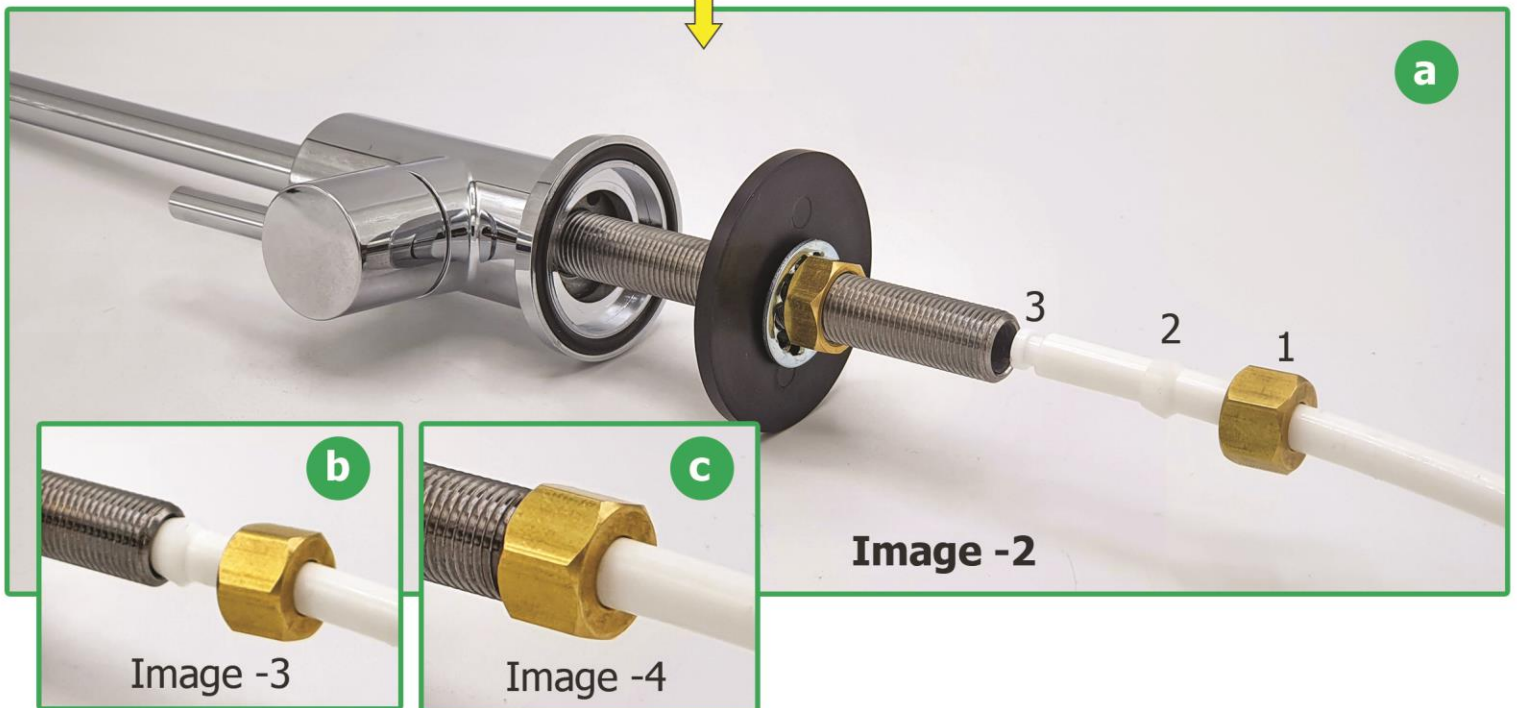
## Tap Montage to the Counter



Set the tap to the hole with 12 mm that we drilled on the kitchen counter as indicated on the image (**Image -1**). Respectively, affix the bottom gaskets and fasten the tap with compression nut.



Before passing into **Image -2**, you must fasten the connection above, the tap, on the counter and then you should go on with **Image -2!**



Cut an adequate amount of 5-meter white hose included in the montage package (approximately 80-100 cm), and affix 3 parts of it to the hose respectively as shown on **Image -2**, then set the hose into tap as shown on the Image -3. Compress the nut by wrench as seen on Image -4.



## Preparing of the Water Tank for Montage

Hose Input



Tank Valve



Tank Input



Teflon Tape

1 Roll the part of water input with Teflon tape.

2 Mount the tank valve turning by hand.



8-Liter Water Tank



Tank Valve Connection Way-1



Tank Valve Connection Way-2



When you mount the tank valve, it should be seen as image on the left. In the image, the valve is on.

## Preparing of the Front Residue Filter

1 Pull off the blind plug on the direction 2 by pressing connecting tabs shown on 1.



Cut a hose according to the distance that you will locate the front residue to the ball valve which you have already prepared to access the water out of water supply input and affix the hose to the filter input, put the exit of filter to "Input" (in) part of the purifying device.

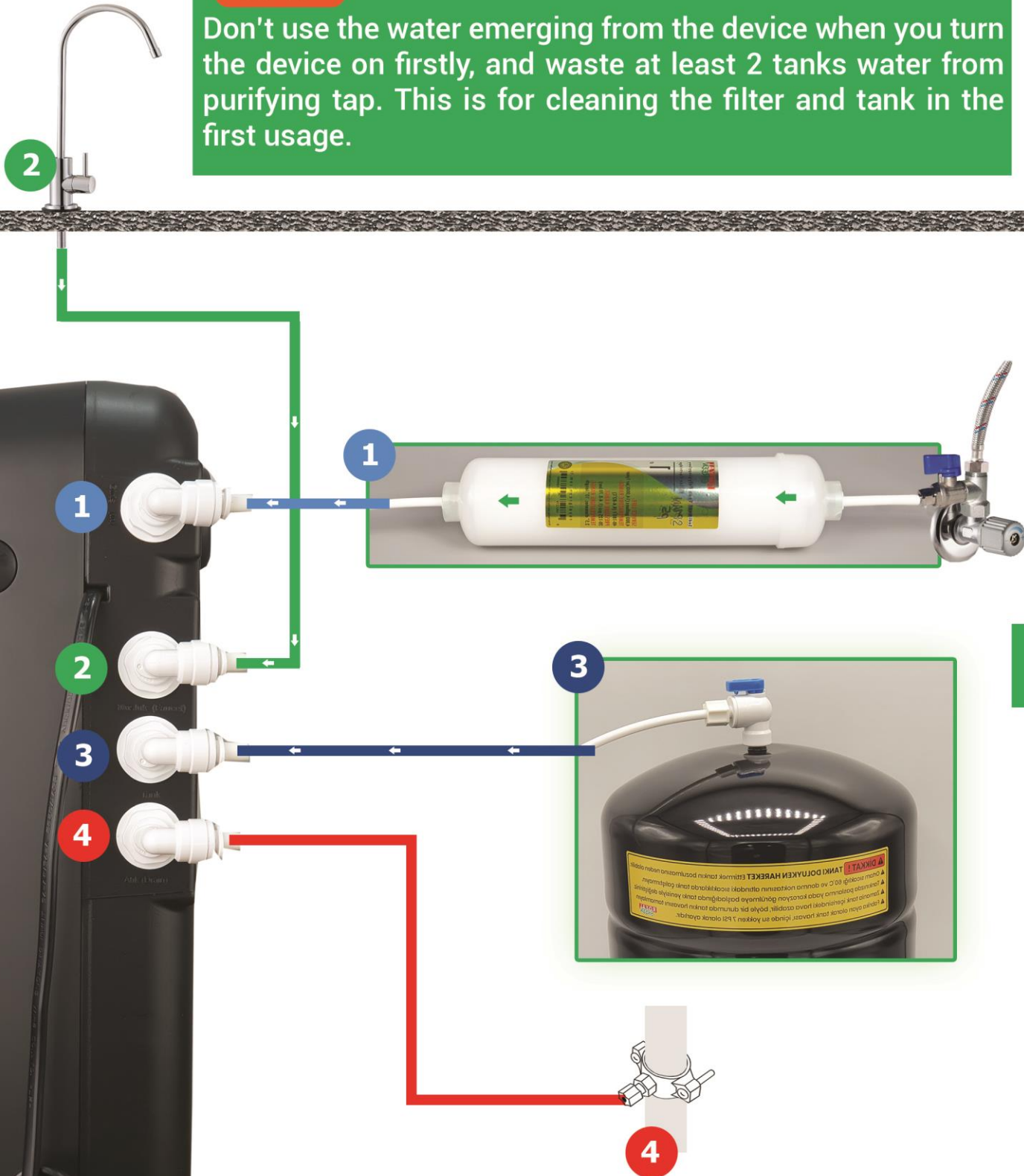


Please pull it to "Input" (in) part of the purifying device.

## Connecting Hoses to the Device

### Attention!

Don't use the water emerging from the device when you turn the device on firstly, and waste at least 2 tanks water from purifying tap. This is for cleaning the filter and tank in the first usage.

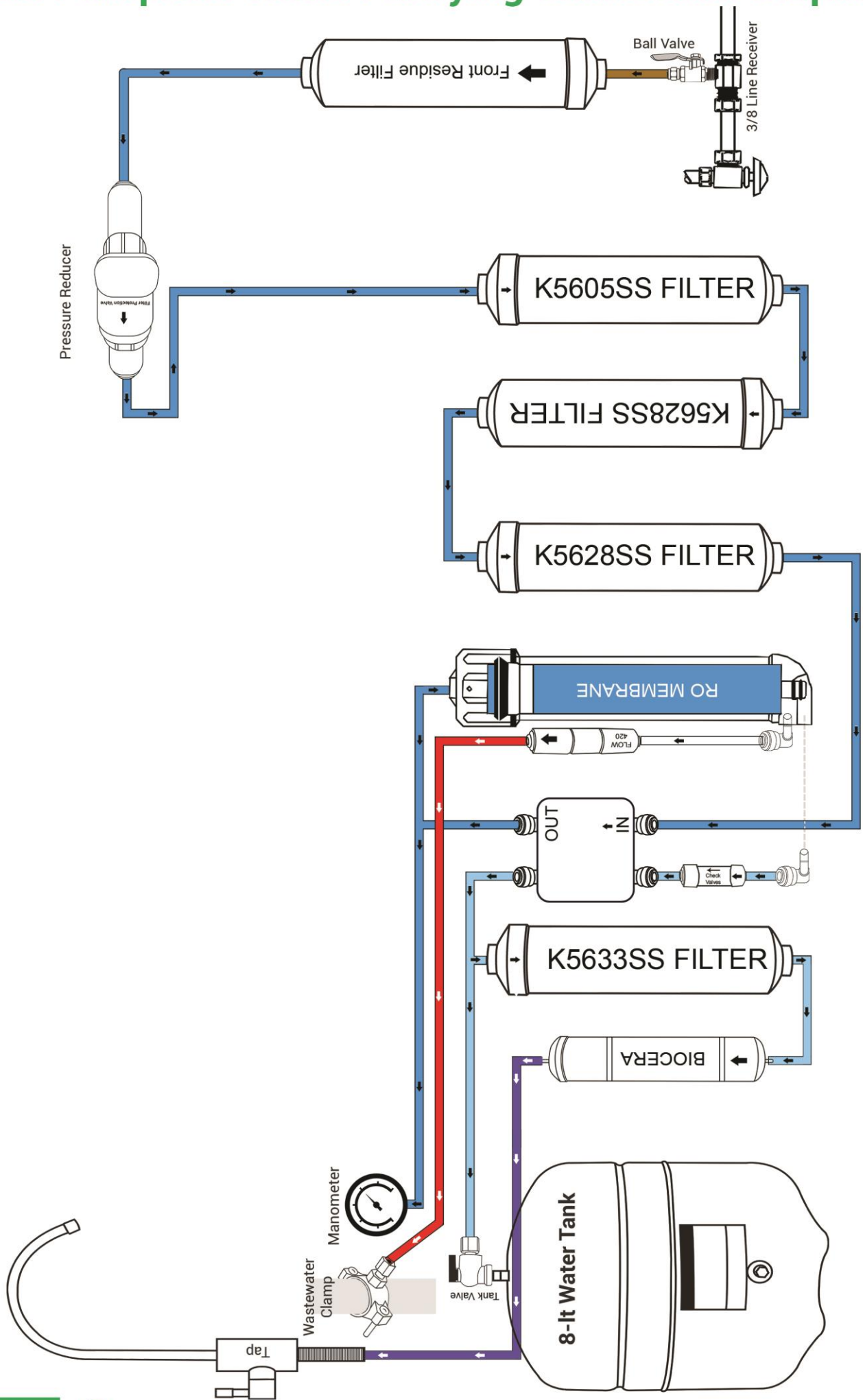


### Attention!

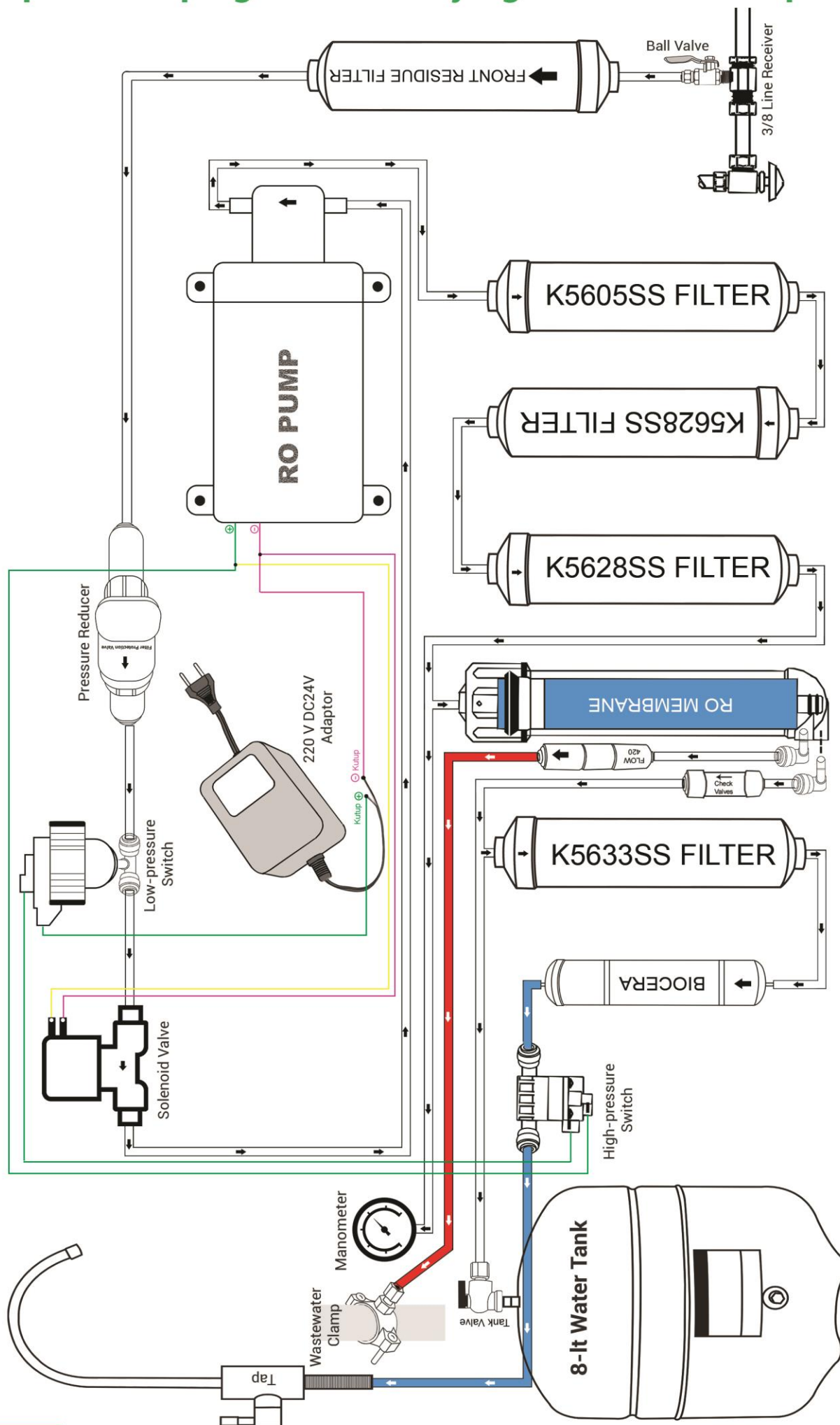
The water flowing out of device can be concentrated white colour in the first few days. It stems from the air filling into filters in the first usage. Air stuck in the tank and filter becomes free when you take in water, and flowing water may seem like chloric or calcareous but those are water blisters. It is a normal and temporary circumstance. You can use the water.



# Luxplus Pumpless Water Purifying Connection Diaphragm

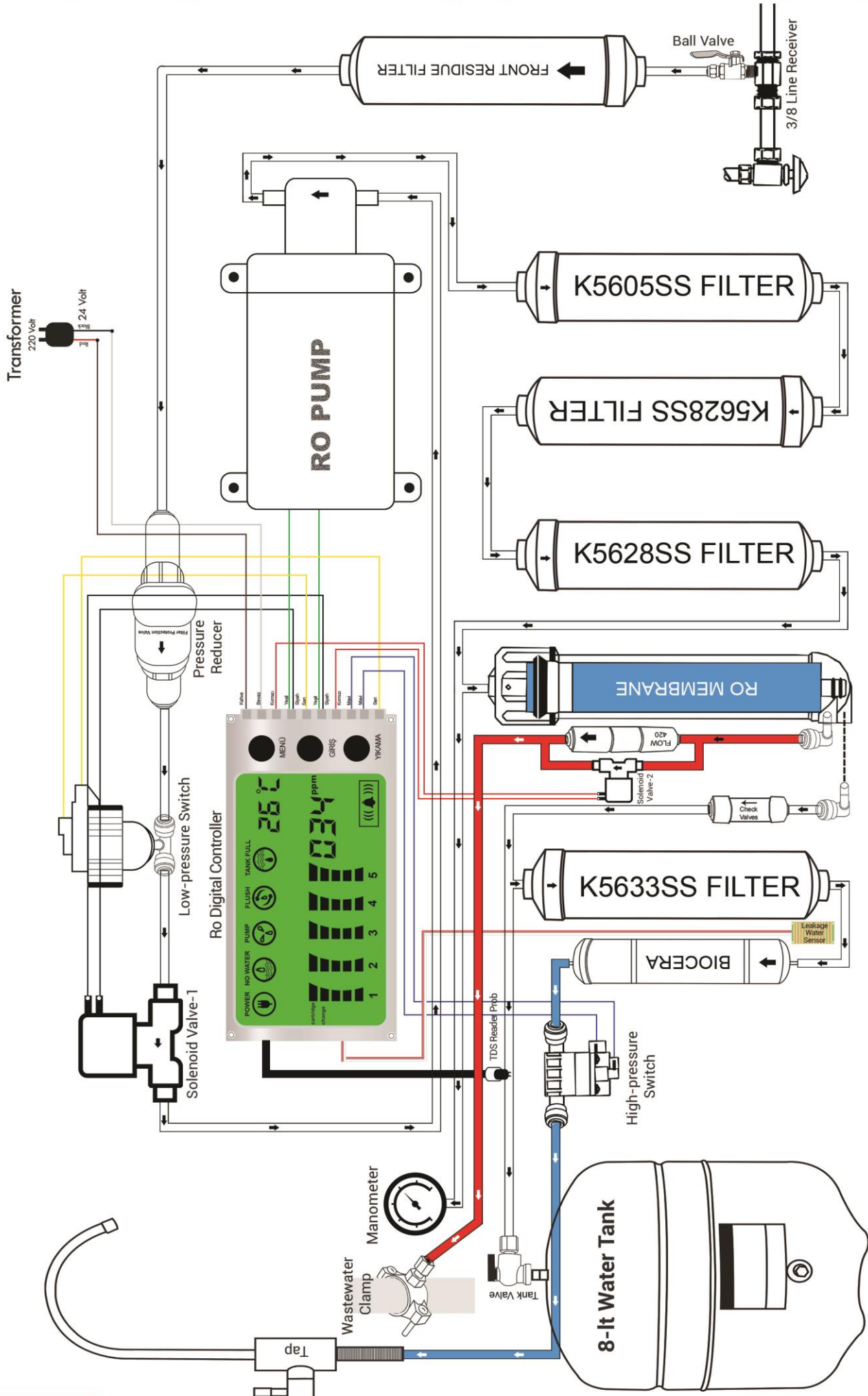


# Luxplus Pumping Water Purifying Connection Diaphragm





# Luxplus Digital Water Purifying Connection Diagram



# Filter Alteration Time

## 1. Phase K5605 SS OMNIPURE Sediment Filter. Maximum One Time for 24 Months

Last Alteration Date	Last Alteration Date	Last Alteration Date	Last Alteration Date
...../...../20.....	...../...../20.....	...../...../20.....	...../...../20.....

## 2. Phase K5628 SS OMNIPURE GAC Carbon Filter. Maximum One Time for 24 Months

Last Alteration Date	Last Alteration Date	Last Alteration Date	Last Alteration Date
...../...../20.....	...../...../20.....	...../...../20.....	...../...../20.....

## 3. Phase K5628 SS OMNIPURE GAC Carbon Filter. Maximum One Time for 24 Months

Last Alteration Date	Last Alteration Date	Last Alteration Date	Last Alteration Date
...../...../20.....	...../...../20.....	...../...../20.....	...../...../20.....

## 4. Phase Membrane Filter. Maximum One Time for 24 Months

Last Alteration Date	Last Alteration Date	Last Alteration Date	Last Alteration Date
...../...../20.....	...../...../20.....	...../...../20.....	...../...../20.....

## 5. Phase Biocera Antioxidant Filter. Maximum One Time for 24 Months

Last Alteration Date	Last Alteration Date	Last Alteration Date	Last Alteration Date
...../...../20.....	...../...../20.....	...../...../20.....	...../...../20.....

## 6. Phase K5633 SS OMNIPURE Post Carbon: Maximum One Time for 24 Months

Last Alteration Date	Last Alteration Date	Last Alteration Date	Last Alteration Date
...../...../20.....	...../...../20.....	...../...../20.....	...../...../20.....

\*\*\*Filter alteration time can vary depending on the qualification of tap water or daily usage amount.

\*\*\*You need to alter the filters regularly as to perpetuate the product performance.

\*\*\*In case original filter isn't used, our firm doesn't accept any responsibility related to device performance.





### CERTIFICATE OF WARRANTY

Producer or Importer Firm's:		Vendor Firm's:	
<b>Title</b>	: Royal Green Su Arıtma Sis.San.Tic.Ltd.Şti	<b>Title</b>	:Royal Green Su Arıtma Sis.San.Tic.Ltd.Şti
<b>Address</b>	: Çınar Dere Mah. imar Sk No:7A Pendik/İstanbul	<b>Address</b>	:Çınar Dere Mah. imar Sk No:7A Pendik/İstanbul
<b>Telephone</b>	: 444 18 22	<b>Telephone</b>	:444 18 22
<b>E-mail</b>	: info@rosuaritma.com	<b>E-mail</b>	:info@rosuaritma.com
<b>Signature of the Official:</b>		<b>Date and Number of Invoice :</b>	
<b>Seal of the Firm:</b>		<b>Date and Place of Delivery :</b>	
		<b>Signature of the Official :</b>	
		<b>Seal of the Firm :</b>	

### Product Details

<b>Type</b> : Water Purifying Device	<b>Guarantee Period:</b> 2 Years
<b>Brand</b> : (RO) Royal Green	<b>Maximum Time to Repair</b> : 20 Days
<b>Model</b> :	<b>Banderol and Serial No :</b>

### WARRANTY CONDITIONS

- 1) Guarantee period starts from the delivery date of product and it is **2 years**.
- 2) Product including every part of it is completely under warranty. Except for filter alterations
- 3) In the case of the product is defective, consumers can use one of their rights as follow:
  - a- **Rescission of agreement,**
  - b- **Asking for a discount from sale price,**
  - c- **Asking for free repairment,**
  - d- **Asking for change the sold product with the product free from defects,**
 in the 11st Article of Law on the Protection of the Consumer numbered 6502.
- 4) In the event that **consumer choose the right of free repairment among those rights**, the vendor is liable at repairing the product or having the product repaired without demanding any fee under the name of labour cost, price of changed part, or any other name. Consumer can also use the right of free repairment against producer or importer. Vendor, producer, and importer are severally responsible for the use of consumer's that right.
- 5) In the event that consumer used **the right of free repairment**, and if:
  - The product breaks down again within the time of warranty,
  - Maximum time to repair is exceeded,
  - It is determined by authorized service station, vendor, producer, or importer with a report that its repairment is impossible, Consumer can request the **product's value return, price discount at the rate of defect or changing with the product free from defects, if it's possible**, from the vendor. The vendor cannot reject the request of consumer. In case of non-fulfilment of this request, the vendor, producer, and importer are severally responsible for it.
- 6) Time to repair of the product **cannot exceed 20 work days**. This period, if it is in the guarantee period, starts from the notification date of the breakdown regarding product to authorised service station or the vendor, if it is beyond the guarantee period, starts from the delivery of product to authorised service station. If the breakdown of product cannot be fixed within **10 work days**, the producer or importer must allocate another product that has similar features to be used by consumer until completion of the product repairment. If the product breaks down in the guarantee period, the time of repairment will be added to the guarantee period.
- 7) Breakdowns stem from the use of the product in defiance of the user manual will be outside of the scope of warranty.
- 8) Consumer may apply to **Consumer Arbitration Committee or Consumer Court** in their residential area or in the place, where consumer action is taken, for possible conflicts regarding the use of rights arose from warranty.



ROYAL  
GREEN



Antioxidant 8.5pH

444 18 22

Çınardere Mah. İmar Sk. No:7/A Pendik İSTANBUL

[royalgreen.com.tr](http://royalgreen.com.tr)